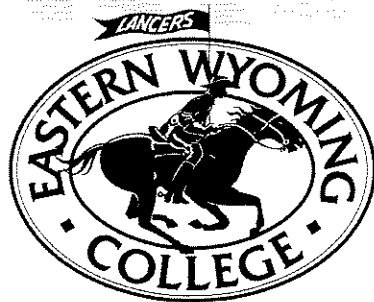
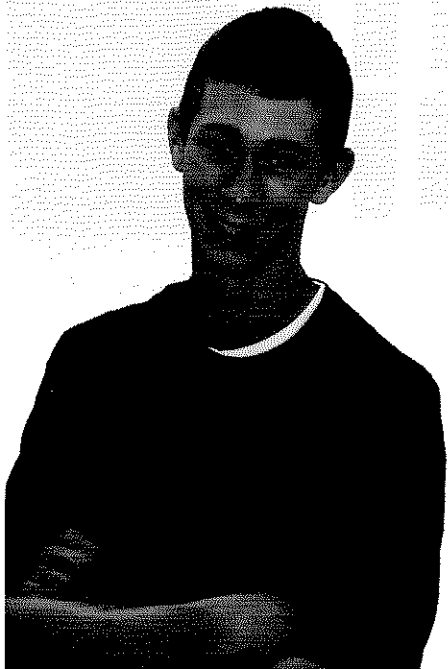


2007 - 2008 Overview

A Great Decision



I decided...

I decided to attend a college where the instructors knew my first name and the classes were small. I also wanted a college located in a small town.

Fast Facts

EWC Enrollment - 1,446

Student to Faculty Ratio - 12:1

Torrington Population - 5,776

Distance to Other Cities:

Scottsbluff, NE - 30 miles

Cheyenne, WY - 84 miles

Casper, WY - 145 miles

Denver, CO - 184 miles

Rapid City, SD - 220 miles

Salt Lake City, UT - 512 miles

**Accreditation - The Higher Learning Commission;
Member - North Central Association**

Accreditation - American Veterinary Medical Association

Accreditation - American Welding Society

Check out the Lancer Blog at ewc.wy.edu. The blog highlights student activities and success stories.

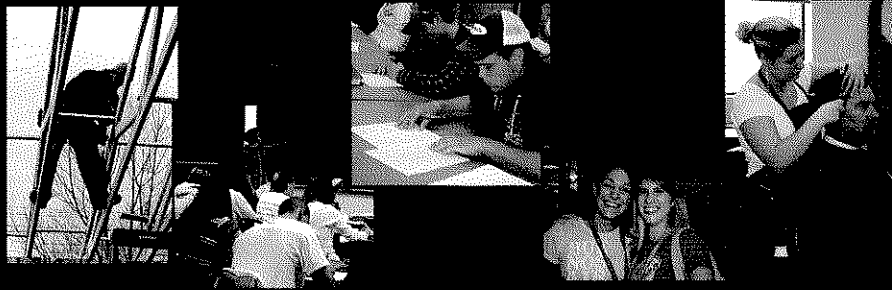
Mark your calendar ...

Technology Day - November

Visitation Day - February

More details are available on the EWC web site.

Eastern Wyoming College does not discriminate on the basis of race, color, national origin, marital status, sexual preference, sex, religion, political belief, veteran status or disability.



EWC is a public community college located in the Platte Valley of Eastern Wyoming. Students attend here from all over the country—but most come from Wyoming, Nebraska, Colorado, and South Dakota. They come here for great programs—like Education, Veterinary Technology, Criminal Justice, and more. They stay because we make learning challenging and fun.

How?

First by keeping our classes small. You'll get to know classmates by first names, and instructors will know you by yours. Small classes mean opportunities to ask questions, get help on tough assignments, and dig deeper into subjects than is possible at most overcrowded universities.

Second, because we're student-friendly. Instructors genuinely care how you're doing with your studies. They make themselves available to help you outside class hours. They follow up to make sure you're making the most of your college experience.

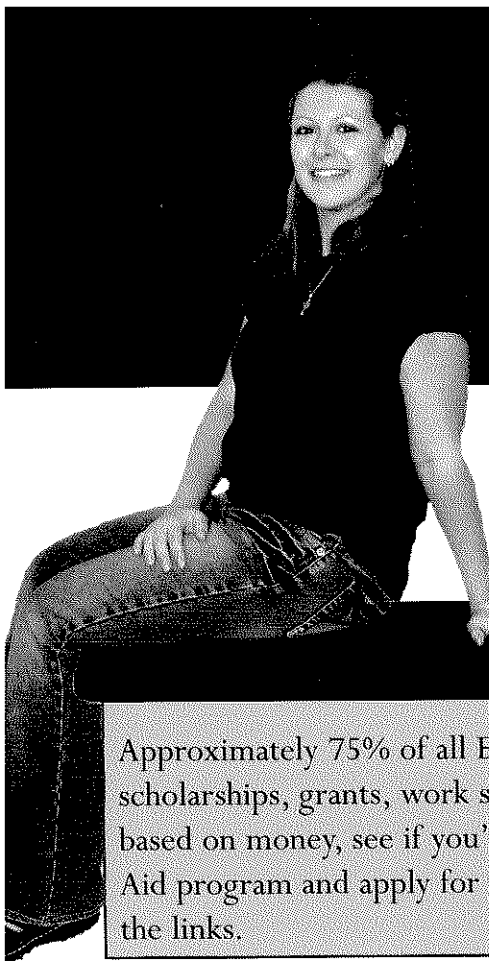
Third, because we have connections. EWC has "articulation agreements" with major colleges and universities across the region, which means the associate's degree you earn at EWC will transfer into a bachelor's degree program at a partnering college with no fuss. No matter what direction you want your education to go, you can start here and get there without skipping a beat.

Research shows that 80% of all existing jobs now require education beyond high school. College graduates earn more and are more satisfied with their careers than individuals with a high school diploma alone.

Now is the time to decide! With all EWC has to offer, why go anywhere else? We'll help you focus on a meaningful career suited to your personality and abilities. We'll get you through the first two years of a bachelor's degree and help you transfer. Or we'll get you on your way to a job in an exciting technical field.

Best of all, we'll surround you with an outstanding learning environment that begins with a caring, involved faculty. You'll learn. You'll make friends for life. You'll have fun. And you'll grow. It's a great decision.

Call EWC today! 1.866.EASTWYO



I decided . . .

I decided to attend a college that was affordable. There were several scholarships I qualified for and the staff was really helpful!

Need Financial Help?

Approximately 75% of all EWC students receive financial assistance in the form of scholarships, grants, work study funds, or student loans. If your college decision is based on money, see if you're eligible for financial aid. Check out EWC's Financial Aid program and apply for assistance on the web! Visit ewc.wy.edu and follow the links.

EWC is affordable!

**Estimated cost per semester for a full-time student:
(based on 12 credit hours)**

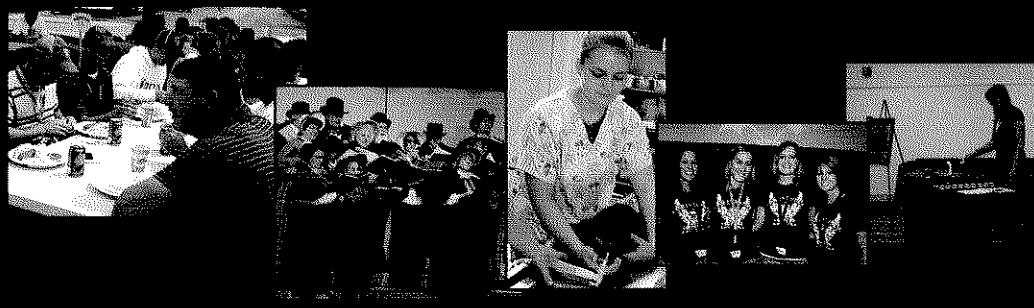
	Resident	Non-Resident	WUE*
Tuition	\$744	\$2,232	\$1,116
Fees	192	192	192
Room/Board**	1,797	1,797	1,797
Books/Supplies	400	400	400
	\$3,133	\$4,621	\$3,505

* The Western Undergraduate Exchange (WUE) tuition rate is calculated 1.5 times the resident tuition rate. To qualify for the WUE rate, a student must be a resident of Alaska, Arizona, California, Colorado, Hawaii, Idaho, Montana, Nevada, New Mexico, North Dakota, Oregon, South Dakota, Utah or Washington. ~~Washington~~ residents will also be eligible for WUE rates.

** Based on standard room, option 1. Other housing options are available, please see the ~~EWC catalog~~ details.

The EWC Board of Trustees reserves the right to make changes to costs as deemed necessary.

Don't forget...
Priority deadline
for scholarships
is March 15
... apply today!



EWC programs take you where you want to go.

EWC offers the first two years of a four-year college degree—which means we can get you started towards any career imaginable. It doesn't matter if you want to be a teacher, doctor, engineer, journalist or accountant. EWC's technical programs can get you ready for a meaningful job in two years or less—outstanding programs like Construction Technology, Welding, Farm & Ranch Management, Web Design, or Cosmetology.

I decided to attend a college where my credits would easily transfer to other colleges and universities.

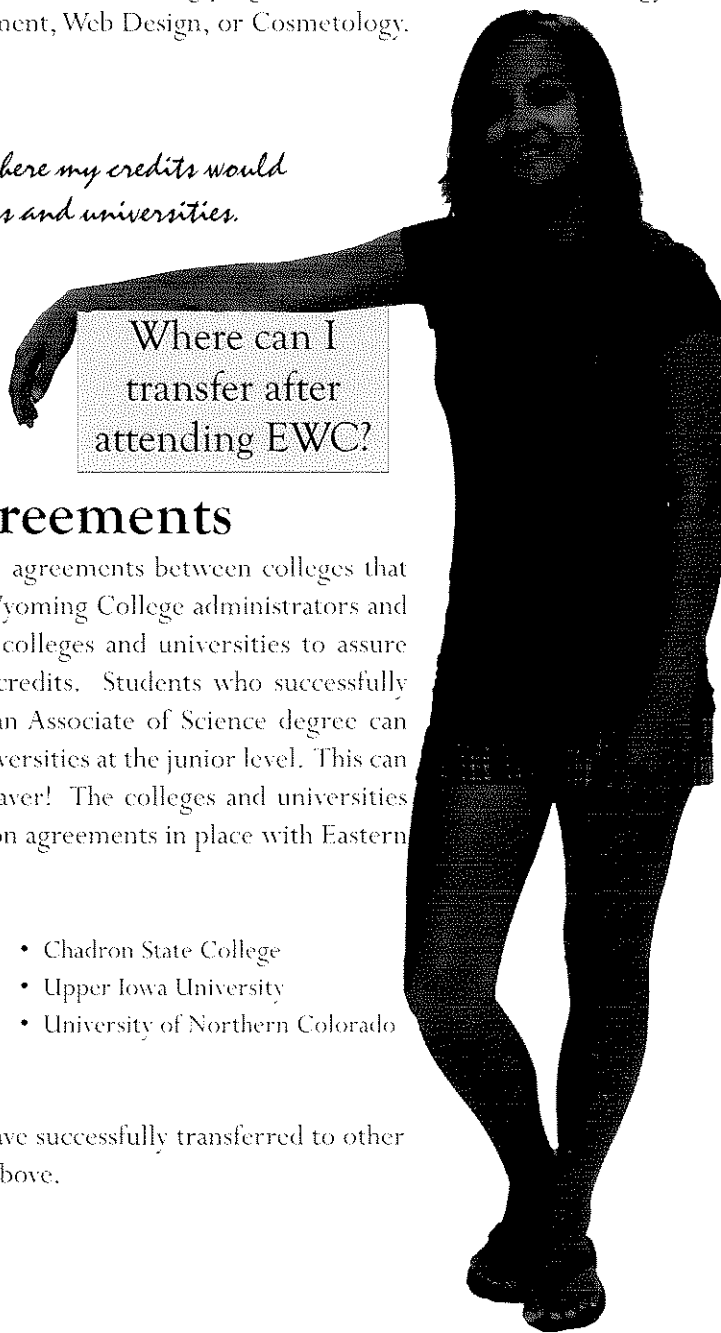
Where can I transfer after attending EWC?

Articulation Agreements

Articulation agreements are formal agreements between colleges that allow credits to transfer. Eastern Wyoming College administrators and faculty spend hours working with colleges and universities to assure smooth and successful transfer of credits. Students who successfully complete an Associate of Arts or an Associate of Science degree can transfer to regional colleges and universities at the junior level. This can be an incredible time and money saver! The colleges and universities listed below have current articulation agreements in place with Eastern Wyoming College.

- University of Wyoming
- Chadron State College
- Black Hills State University
- Upper Iowa University
- South Dakota School of Mines and Technology
- University of Northern Colorado

Eastern Wyoming College credits have successfully transferred to other colleges and universities not listed above.



I decided . . .

Personalized Campus Visits:

Personalized campus visits can be arranged by calling 1.866.EASTWYO or on the EWC website at ewc.wy.edu. Visits are scheduled Monday - Friday, 8:00 a.m. to 4:00 p.m.

While on campus, you will:

- Meet with a faculty member
- Tour with an EWC Student Ambassador
- Visit with the Director of Residence Life and tour the EWC Residence Halls
- Meet with someone from Financial Aid and determine eligibility for financial assistance
- Eat in the cafeteria
- Have all of your questions answered!

And,

- Have a great time!

Don't be swayed by our convenience and great price.

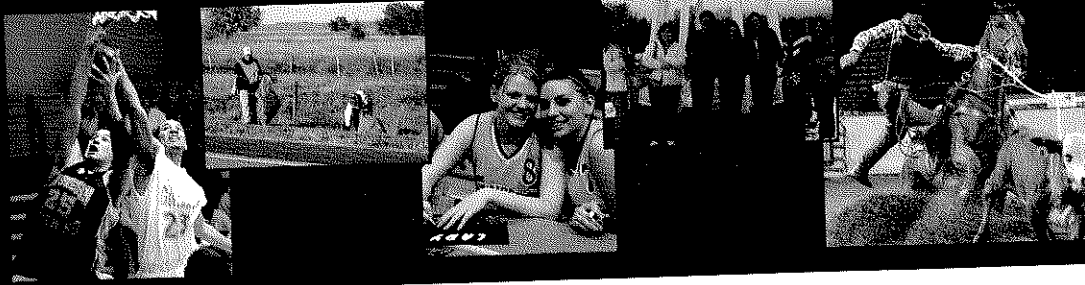
If you want to live at home and earn your degree from EWC, we can help. First, we have 12 Outreach Centers throughout eastern Wyoming. Some students participate at an Outreach Center and may never visit the Torrington campus.

Or, you can take Distance Education courses by compressed video or over the Internet. Distance Education allows students to connect with faculty online, submit assignments electronically, and "attend" class anytime they want! EWC offers four complete programs available via distance education: Business Administration, AAS; Criminal Justice, AA; Interdisciplinary Studies, AA and AS.

I decided to attend a college that was close to home and had the programs and activities I wanted.



EWC Athletics
Men and Women's Basketball
Men and Women's Golf
Men and Women's Rodeo
Women's Volleyball



CAMPUS ACTIVITIES AND ORGANIZATIONS

- Art Club
- Biology Club
- Block and Bridle Club
- Campus Activities Board
- Campus Ministry
- Cosmetology Club
- Creative Writing Club
- Criminal Justice Club
- Gaming Club
- Horizons
- Horse Showing Club
- Housing Council
- Intramurals
- Journalism Club
- Livestock Judging Club
- Phi Theta Kappa International Honor Society
- Rodeo Club
- SkillsUSA - Business/Technology Division
- SkillsUSA - Welding Division
- Speech & Debate
- Student Ambassadors
- Student Senate
- Veterinary Technology Club

PROGRAMS OF STUDY

Associate of Arts

Art
 Business Education
 Communication
 Criminal Justice:
 Corrections
 Law Enforcement
 Education:
 Early Childhood
 Elementary
 Secondary
 English
 History
 Interdisciplinary Studies
 Languages (Foreign)
 Mathematics:
 Secondary Education
 Music:
 Applied
 Education
 Physical Education,
 Health and Recreation
 Political Science
 Psychology
 Sociology

Associate of Science

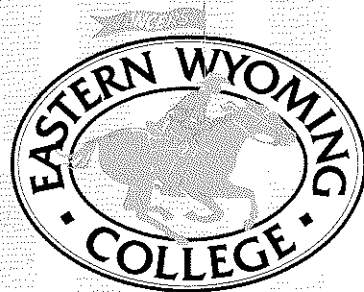
Accounting
 Agricultural Business
 Agricultural Economics
 Agriculture
 Agriculture Education
 General Agriculture
 Rangeland Ecology &
 Watershed Management
 Animal Science
 Biology:
 Environmental Science
 Business Administration
 Economics
 Interdisciplinary Studies
 Mathematics:
 Arts and Science
 Preprofessional:
 Pre-Dentistry
 Pre-Medical Technology
 Pre-Medicine
 Pre-Nursing
 Pre-Pharmacy
 Pre-Veterinary Medicine
 Statistics
 Wildlife & Fisheries Biology
 & Management

Associate of Applied Science and Certificate

Agri-Business
 Beef Production
 Farm & Ranch Management
 Business Administration
 Business Office Technology
 Computer Science:
 Computer Information Systems
 Information Support Specialist
 Network Technician
 Web Design
 Cosmetology
 Hair Technician
 Nail Technician
 Skin Technician
 Criminal Justice:
 Corrections
 Education:
 Early Childhood
 Veterinary Technology
 Welding and Joining Technology
 Machine Tool Technology



We made a great decision!



Eastern Wyoming College
3200 West C Street
Torrington, WY 82240
(307) 532.8200
1.866.EASTWYO
web: ewc.wy.edu